

WEL COME

TO B.S.N.L.(WEST ZONE) G.P.R.S. SERVICES

**SONY ERICSSON K750i CONNECTIVITY WITH LAPTOP/PC USING
USB CABLE VIA GPRS FOR BROWSING INTERNET**

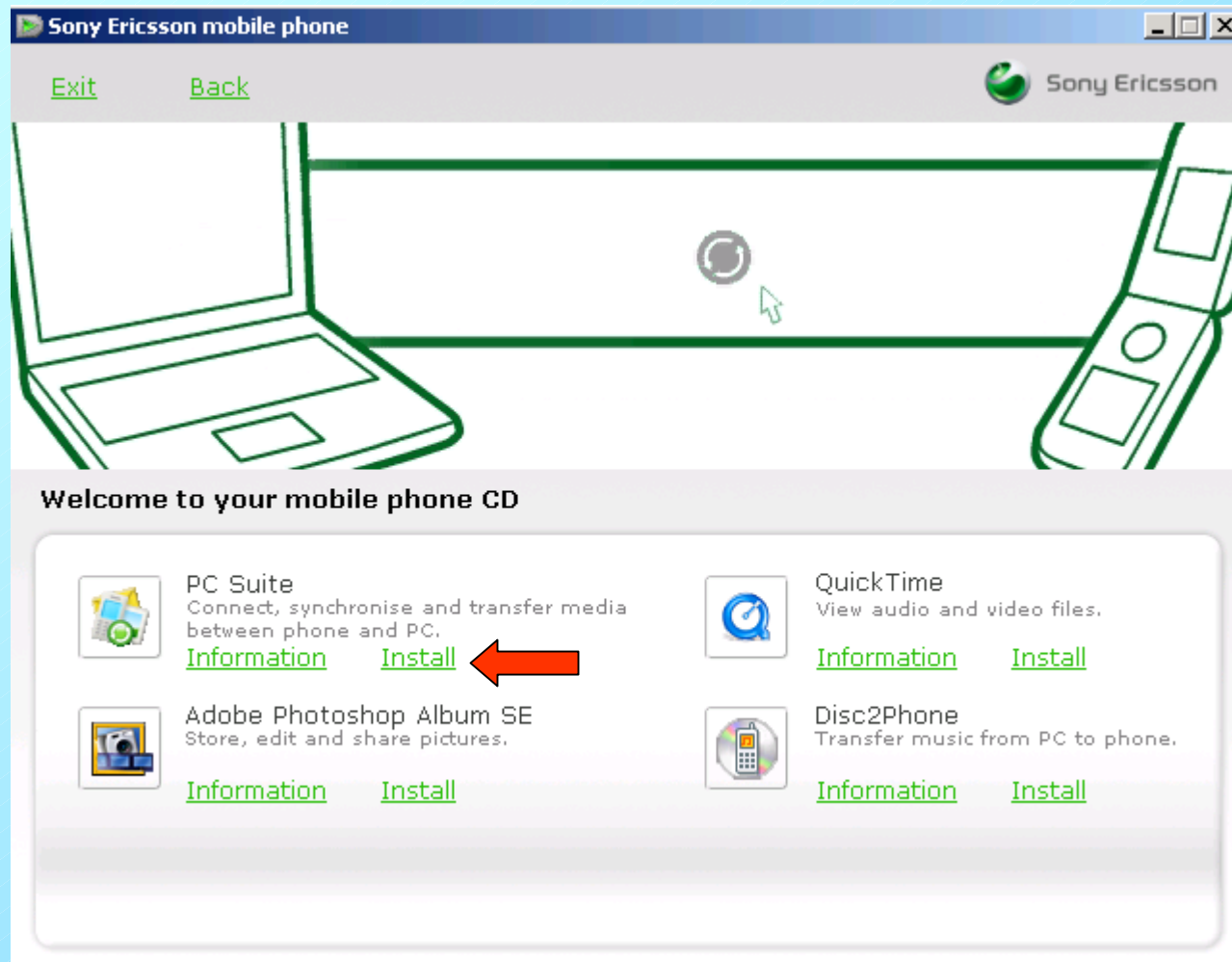
Insert CD and click on English.



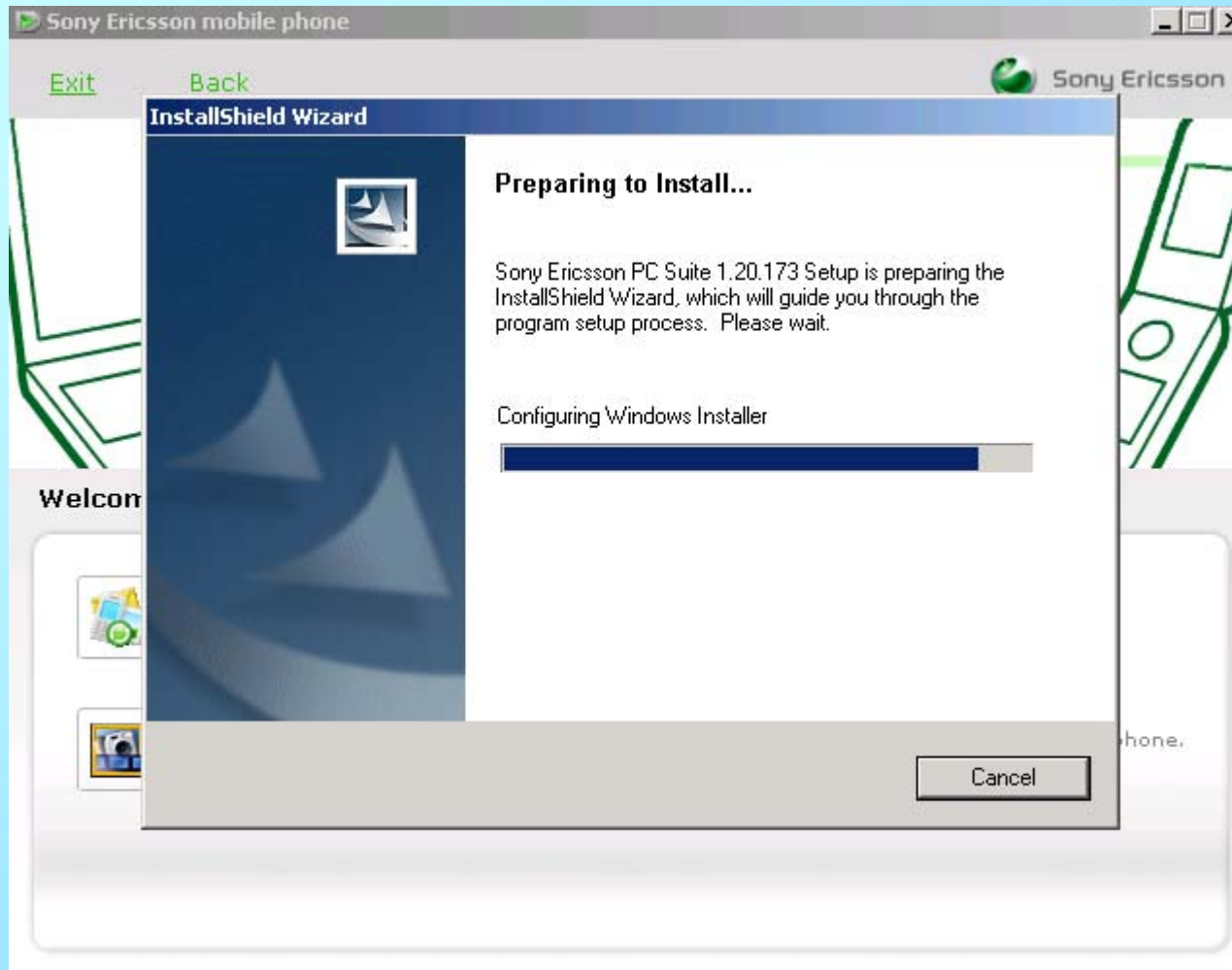
If you had already installed PC suite then go to slide no.13

**The procedure is same for all Sony Ericsson handsets having PC Suite.
Here I had taken example of Sony Ericsson K750i.**

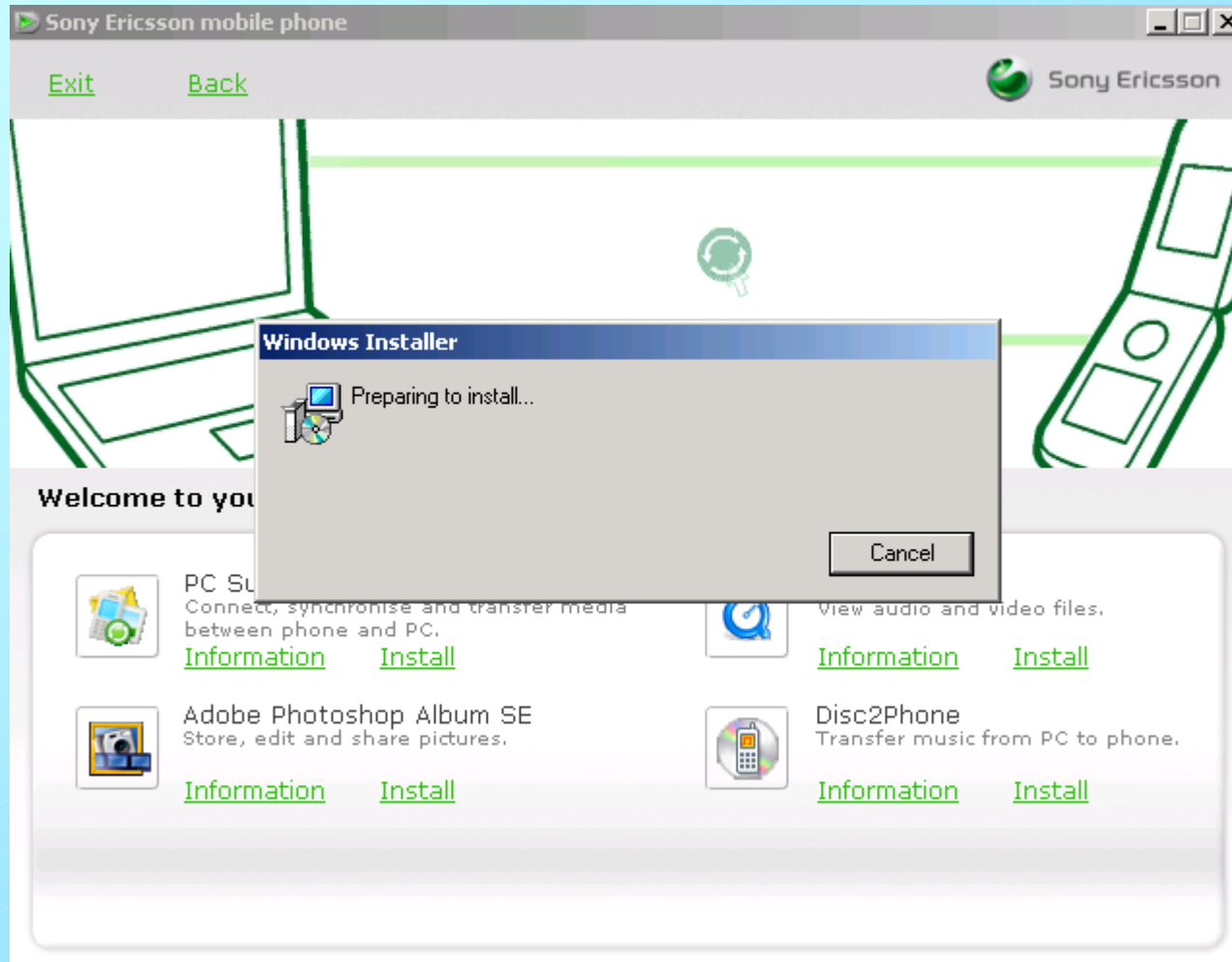
Click on Install



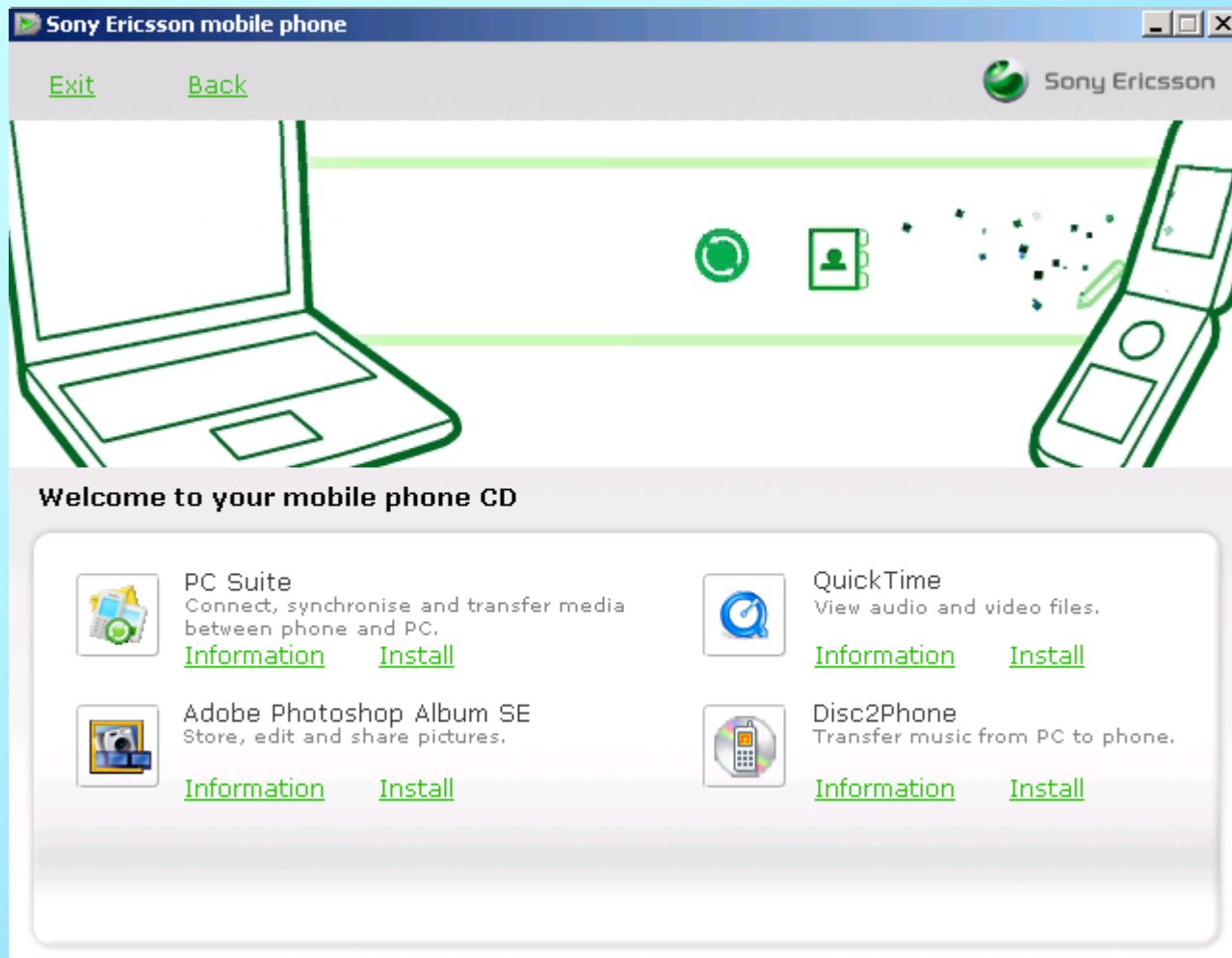
Sony Ericsson PC Suite 1.20.173(old version) is being installed.
Please wait.



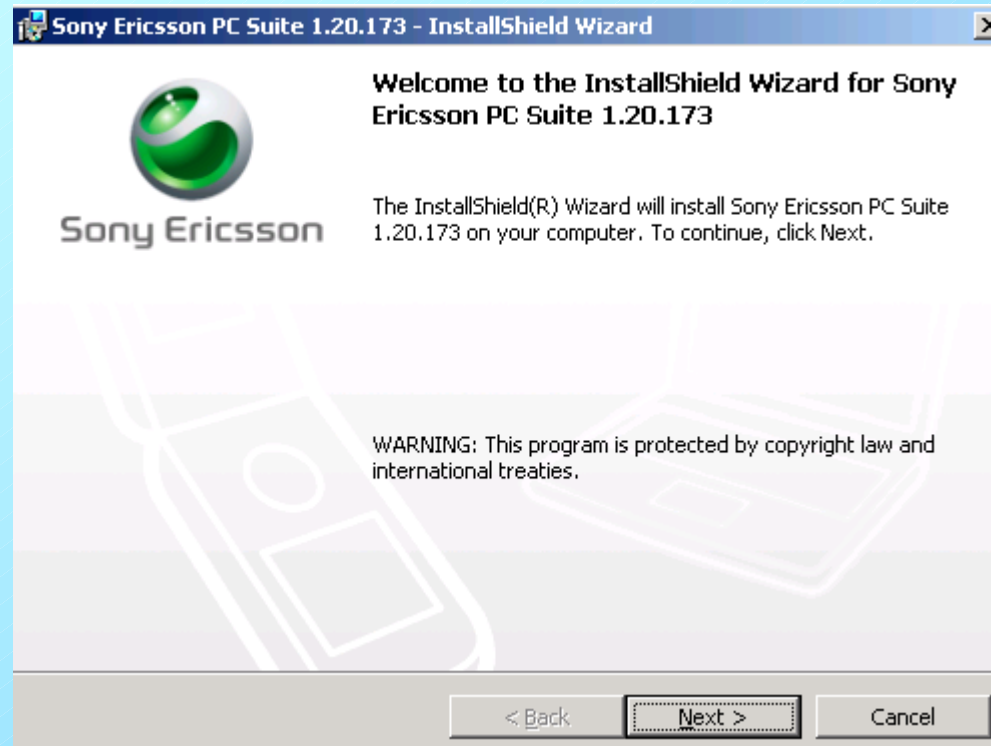
For reference only



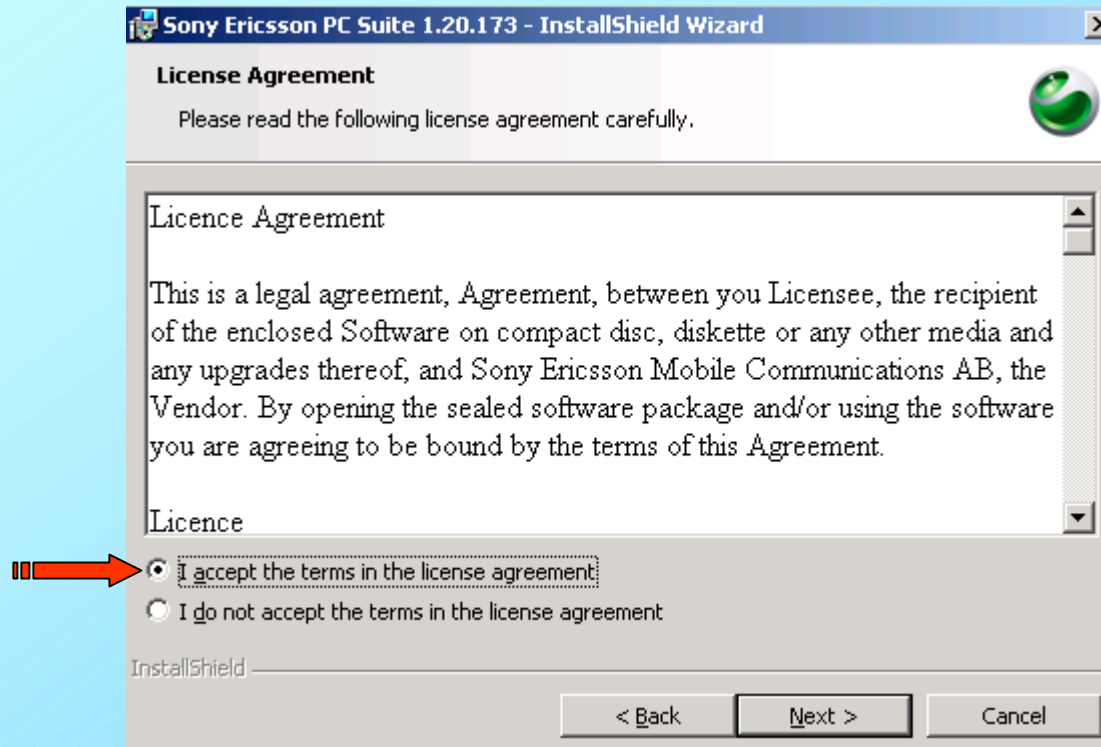
For reference only



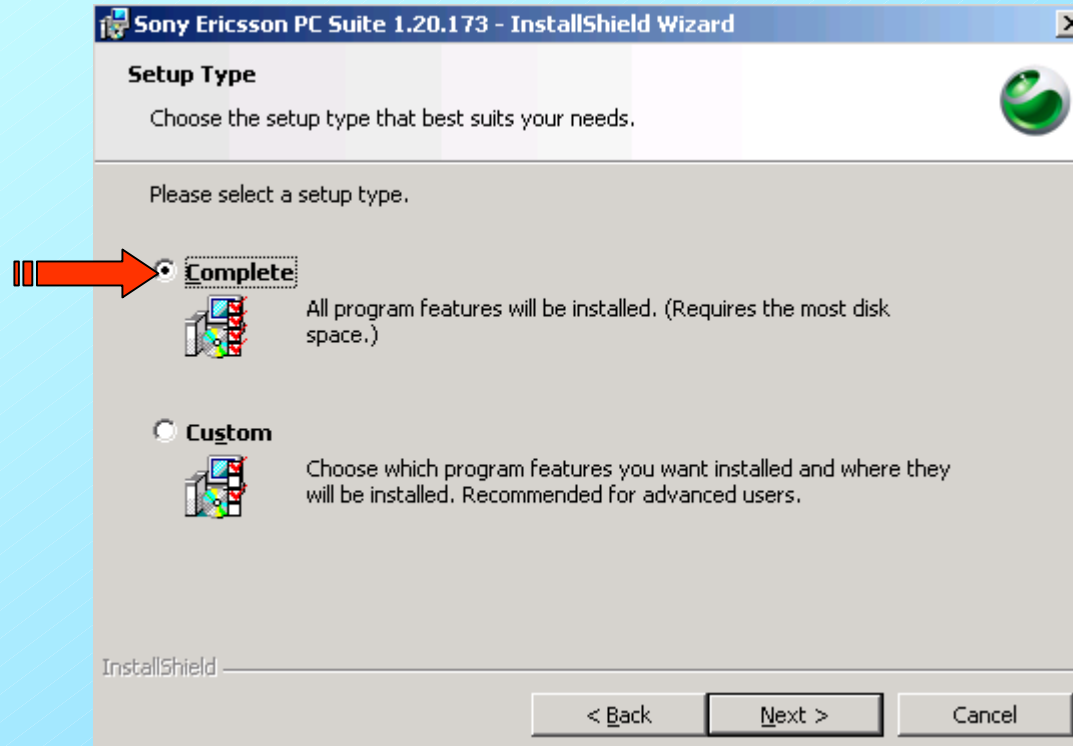
Click on Next>



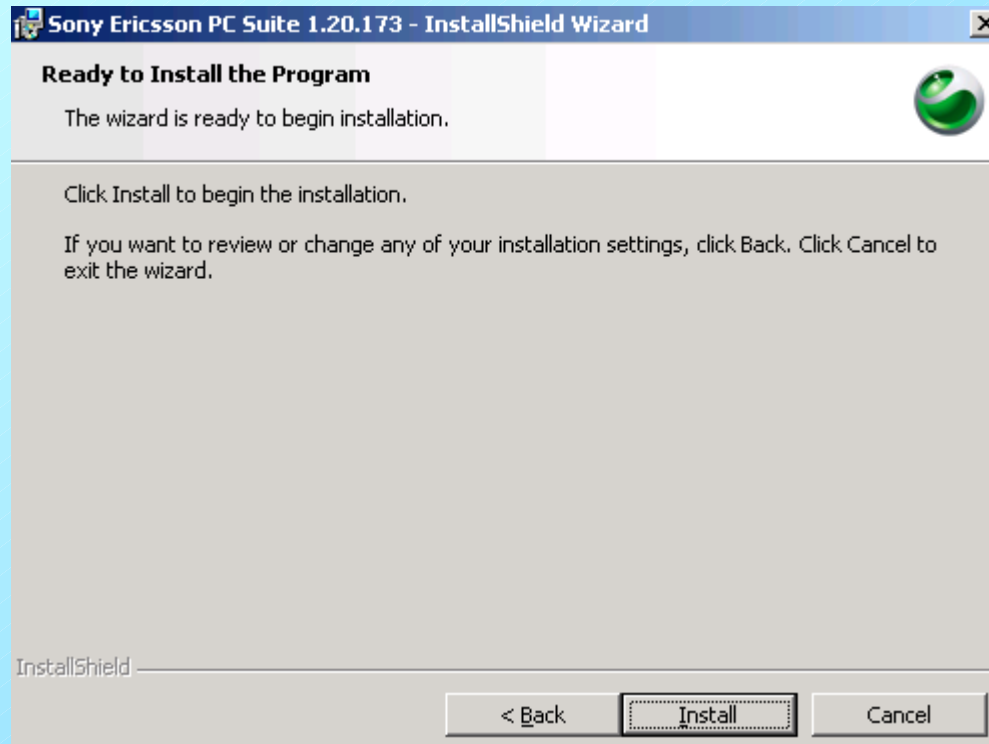
Select I accept the terms in the license agreement and click on Next>



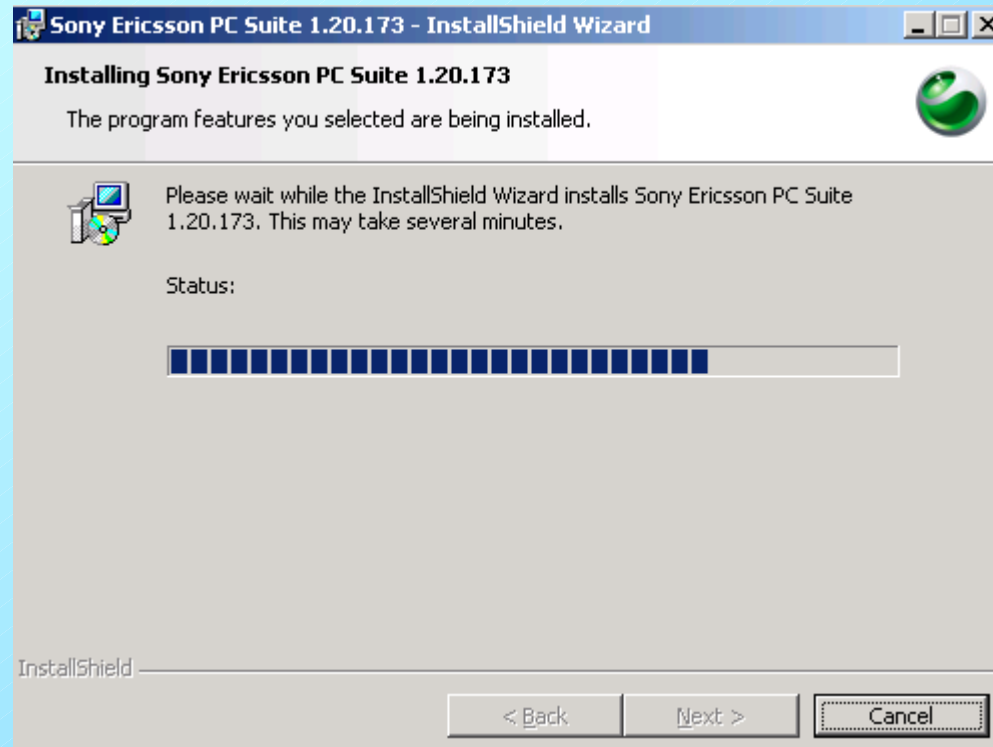
Select Complete and click on Next>



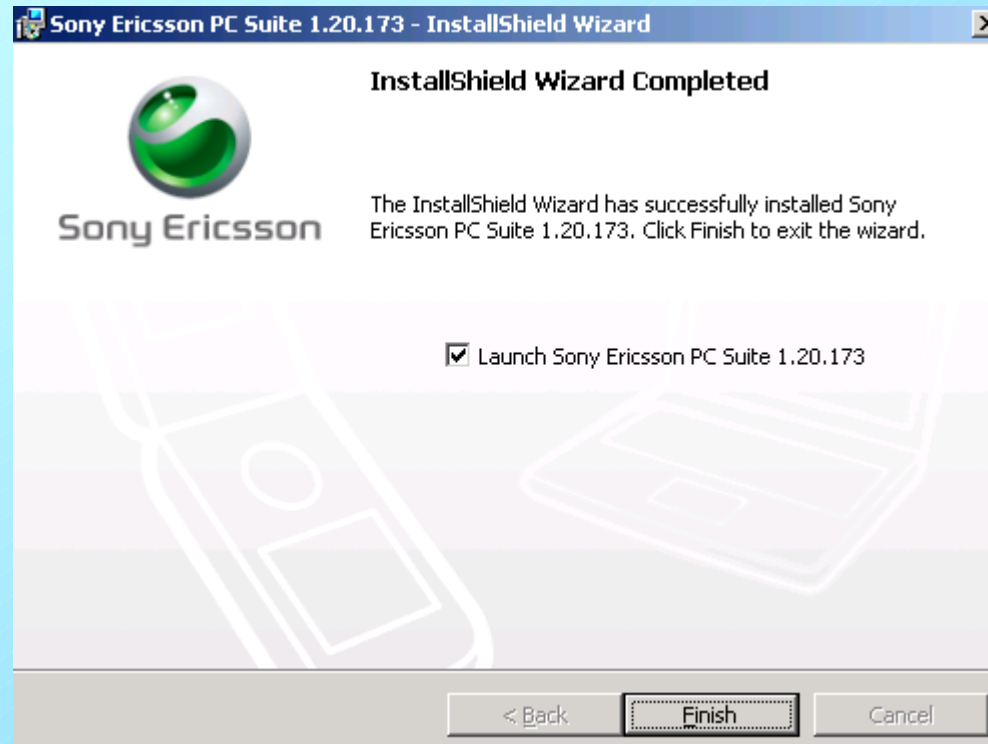
Click on Install



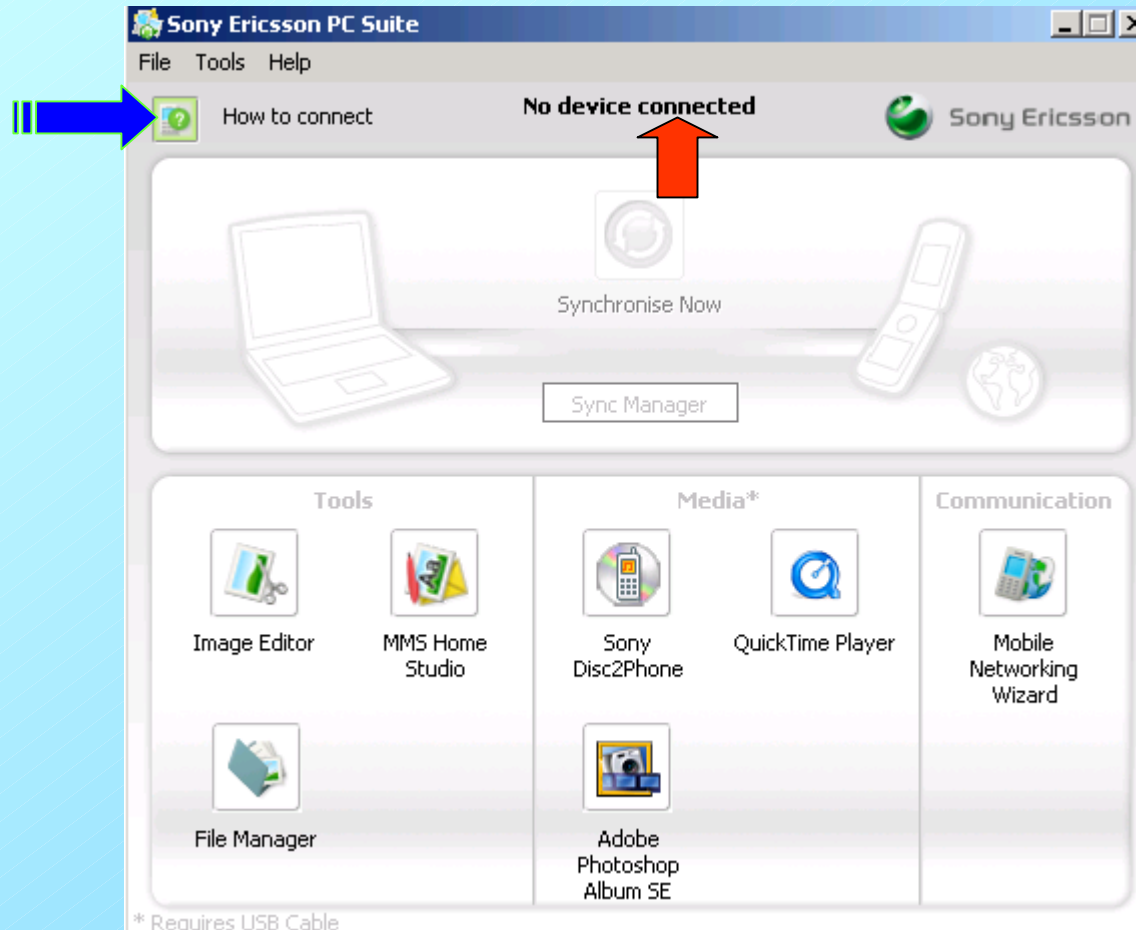
This will be shown please wait for some time.



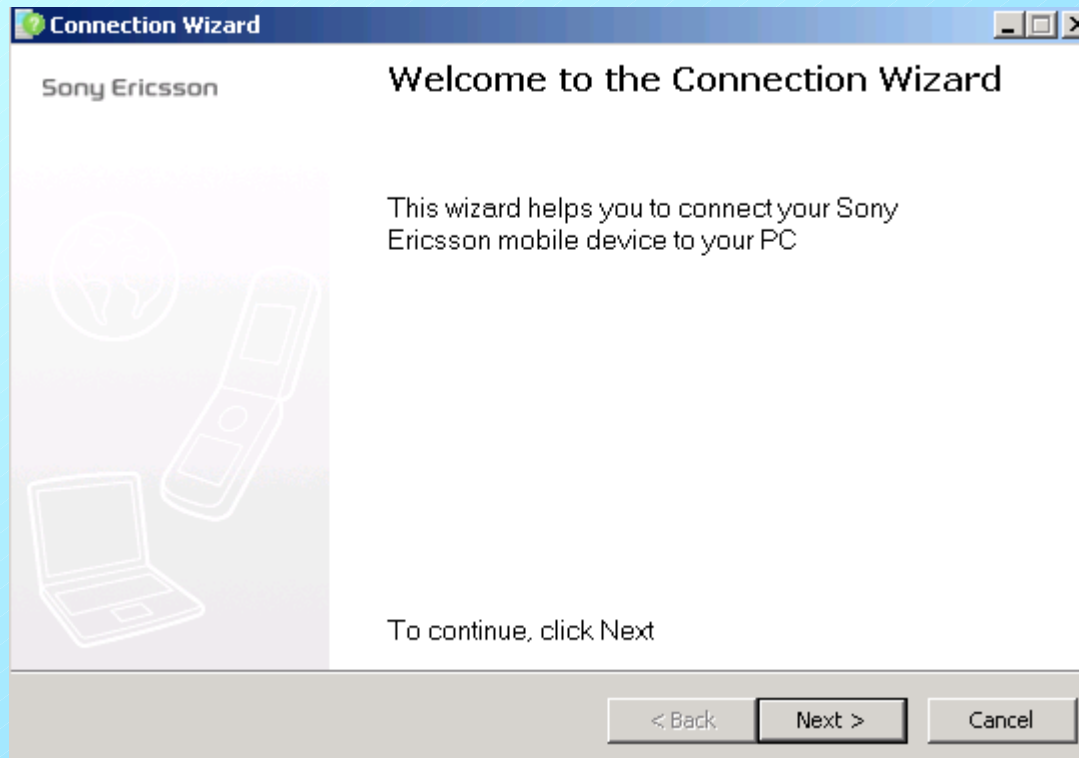
Click on Finish



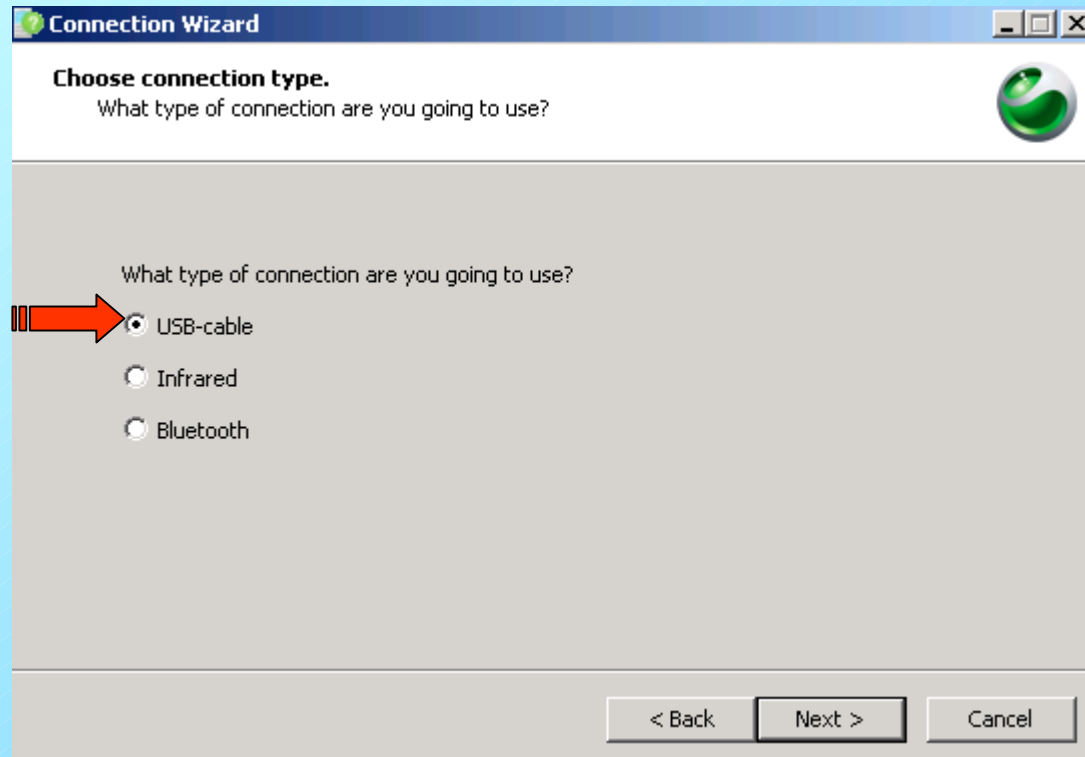
This will open automatically. Please observe that No device connected (Red arrow). Click on How to connect (Blue arrow).



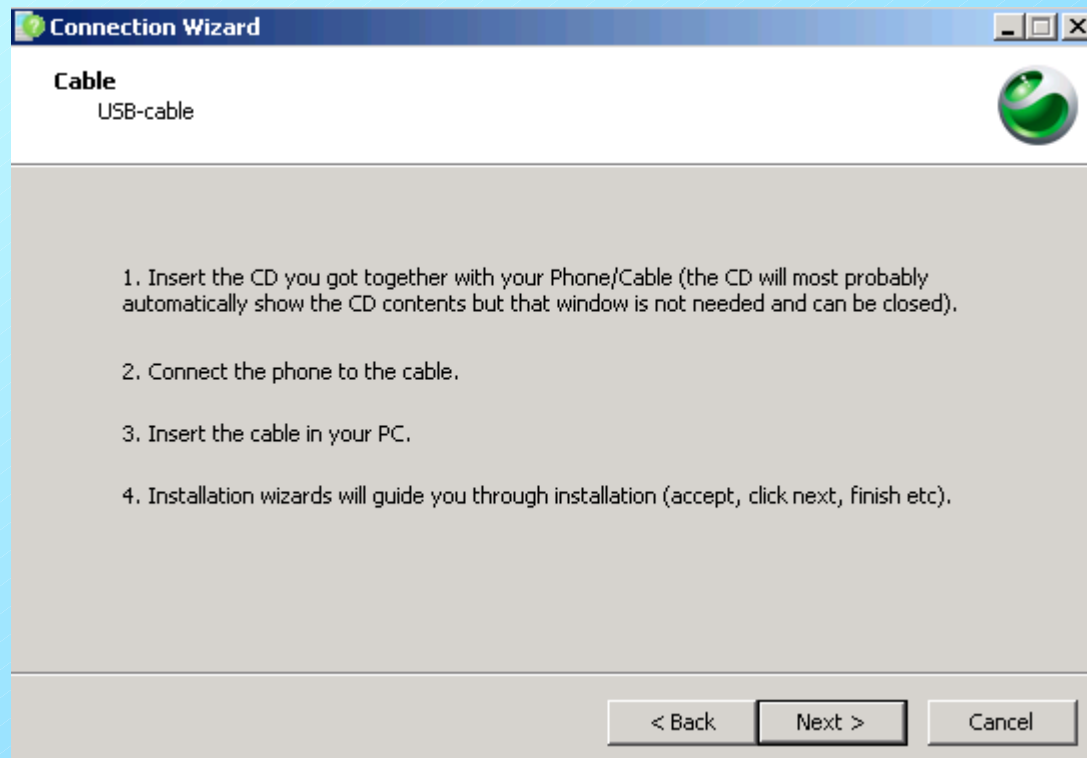
Connection Wizard will open. Click on Next>



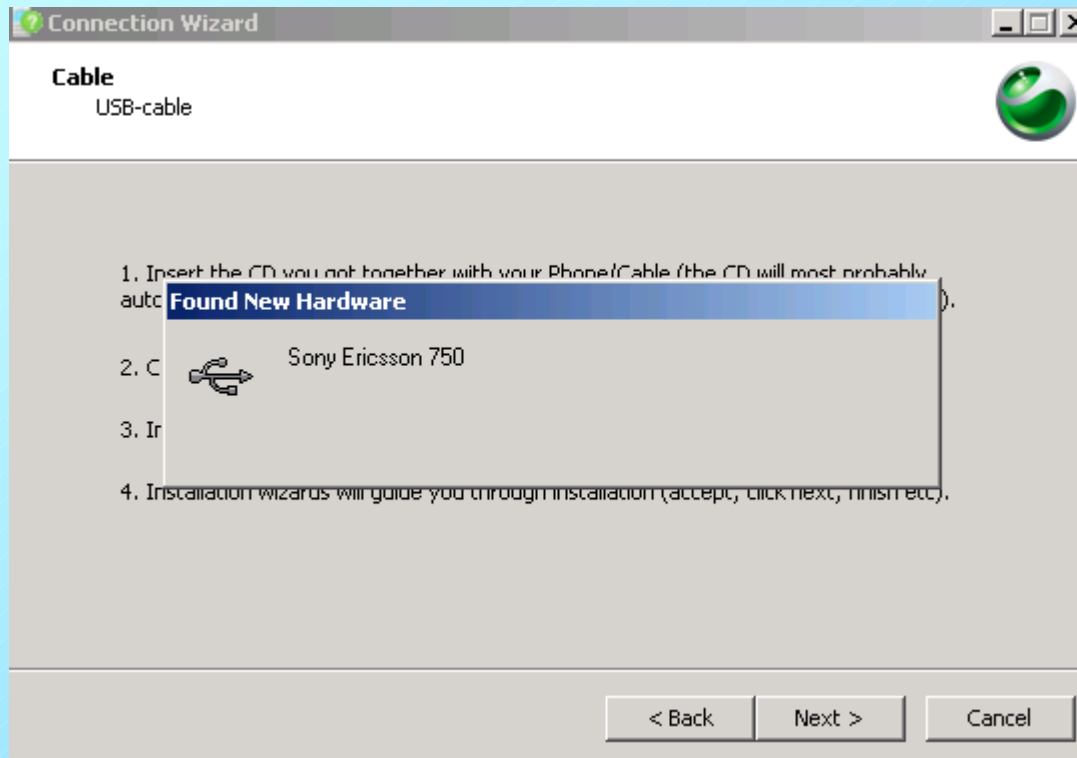
USB Cable is shown selected. You can select any connection i.e. Cable, Bluetooth or Infrared but **It is advisable and insisted to use USB cable only** instead of Bluetooth or Infrared as it gives better speed and reliable connection. Click on Next>



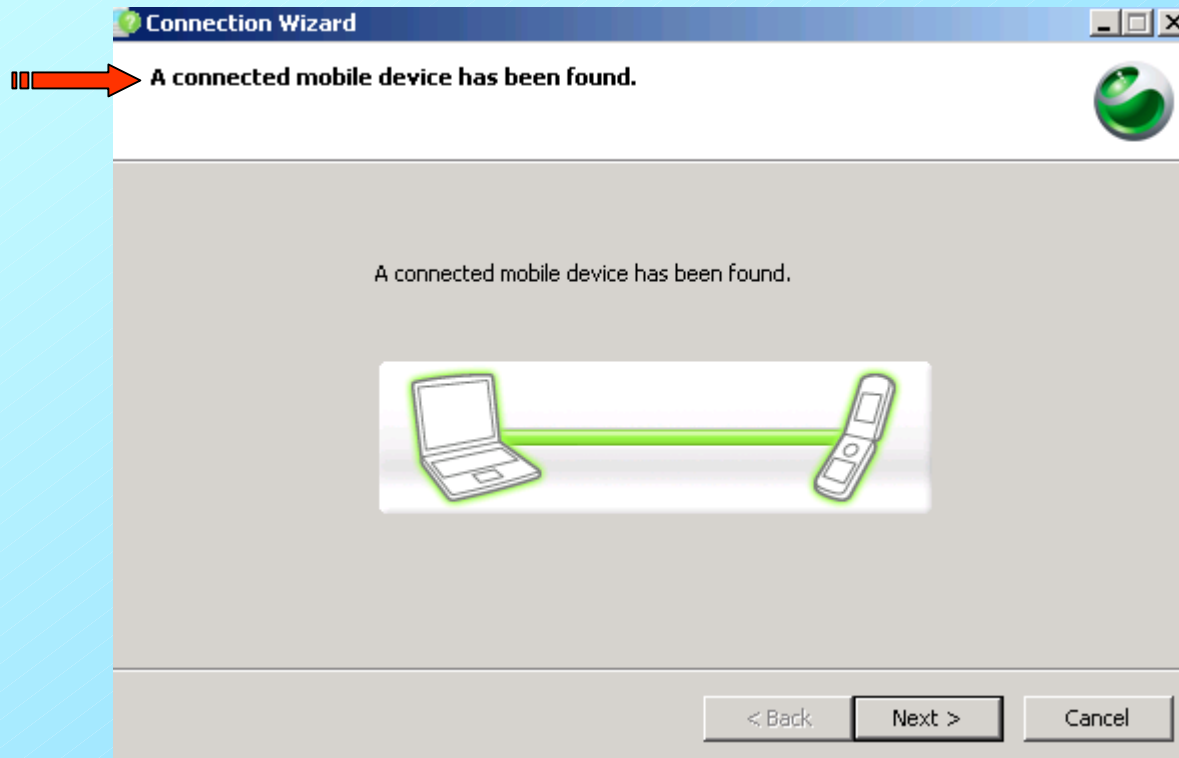
Please connect your cable to the computer and your mobile phone to the cable. For the first time only this hardware and drivers will be get installed. Please do not disconnect the cable while installation. Click on Next>



As soon as cable is connected this will be displayed.



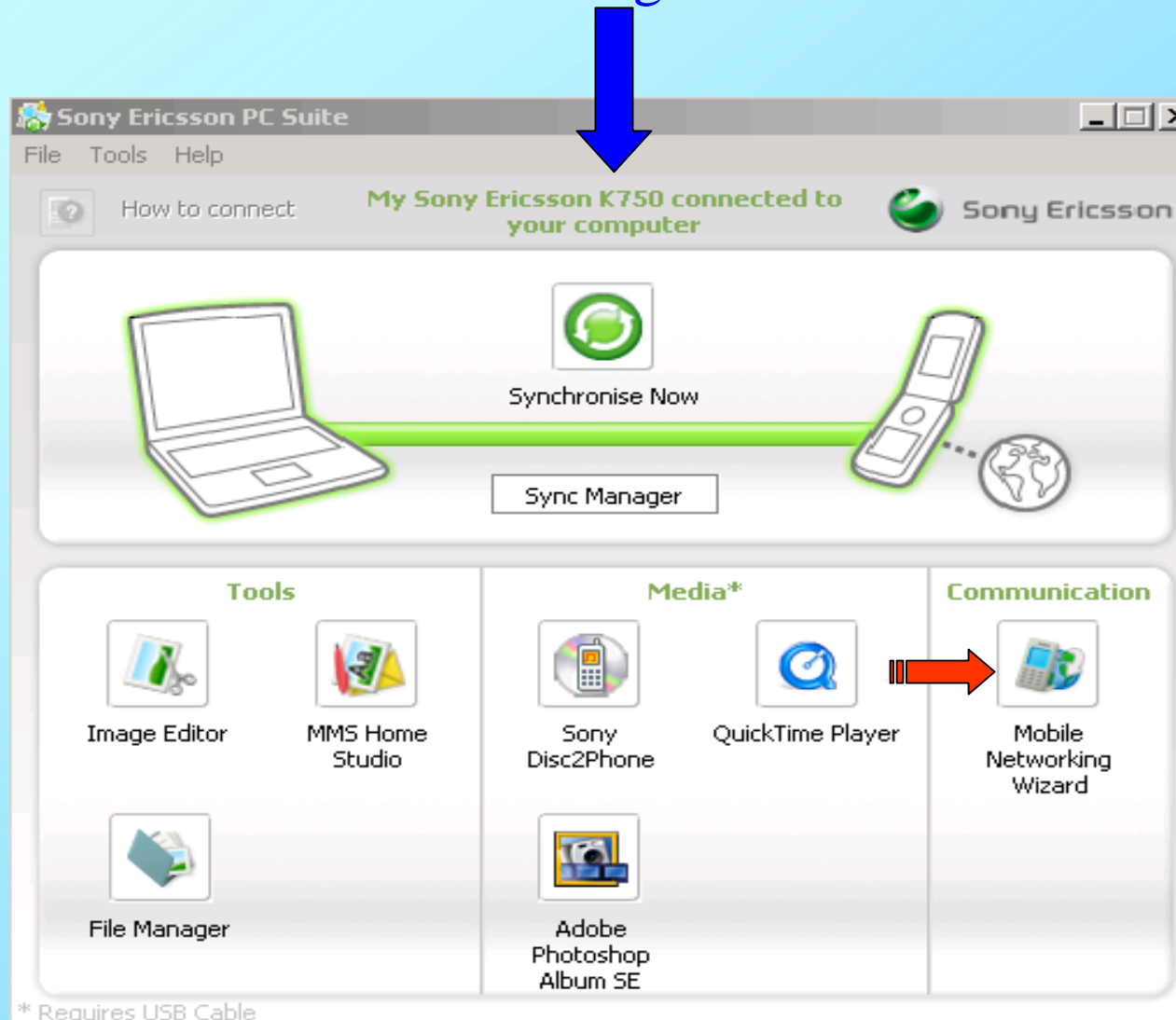
You will be shown the phone is connected (if not then refer our slide show **problems and solution**). Click on Next >



Click on Finish

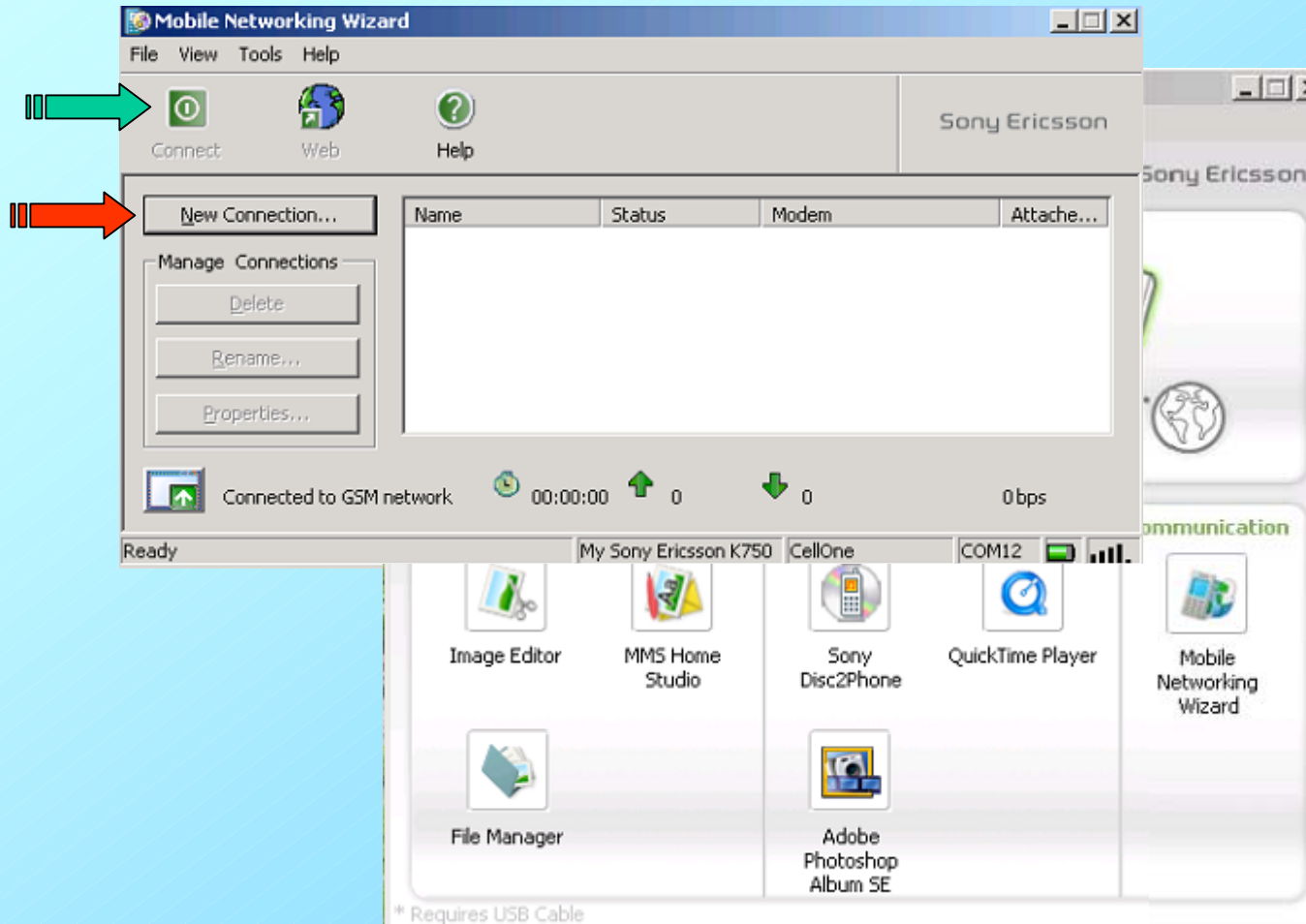


Please see the change. Your mobile model will be shown connected (Blue arrow). (Earlier it was no device connected slide no.13)
Then click on Mobile Networking Wizard.

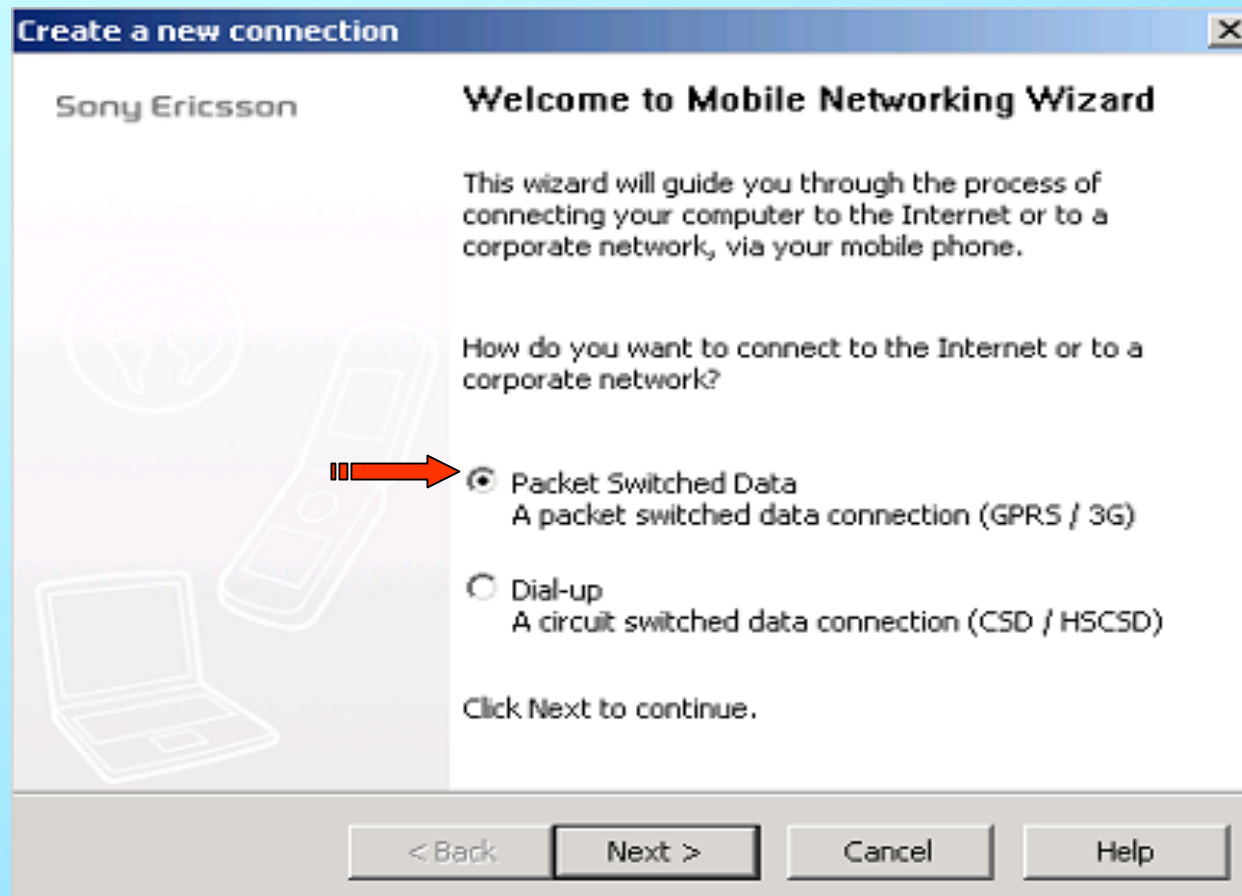


Click on New Connection...(Red arrow)

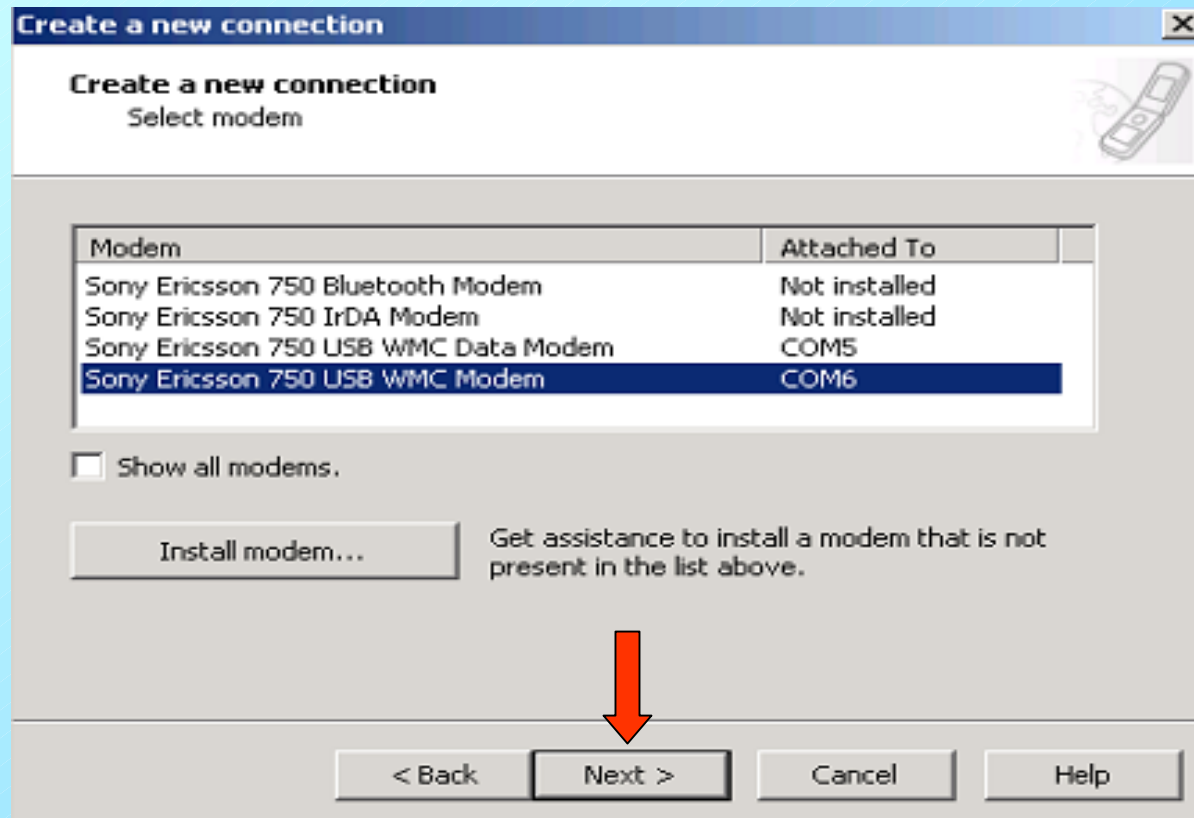
Please observe the connect button is not activated(Green arrow)



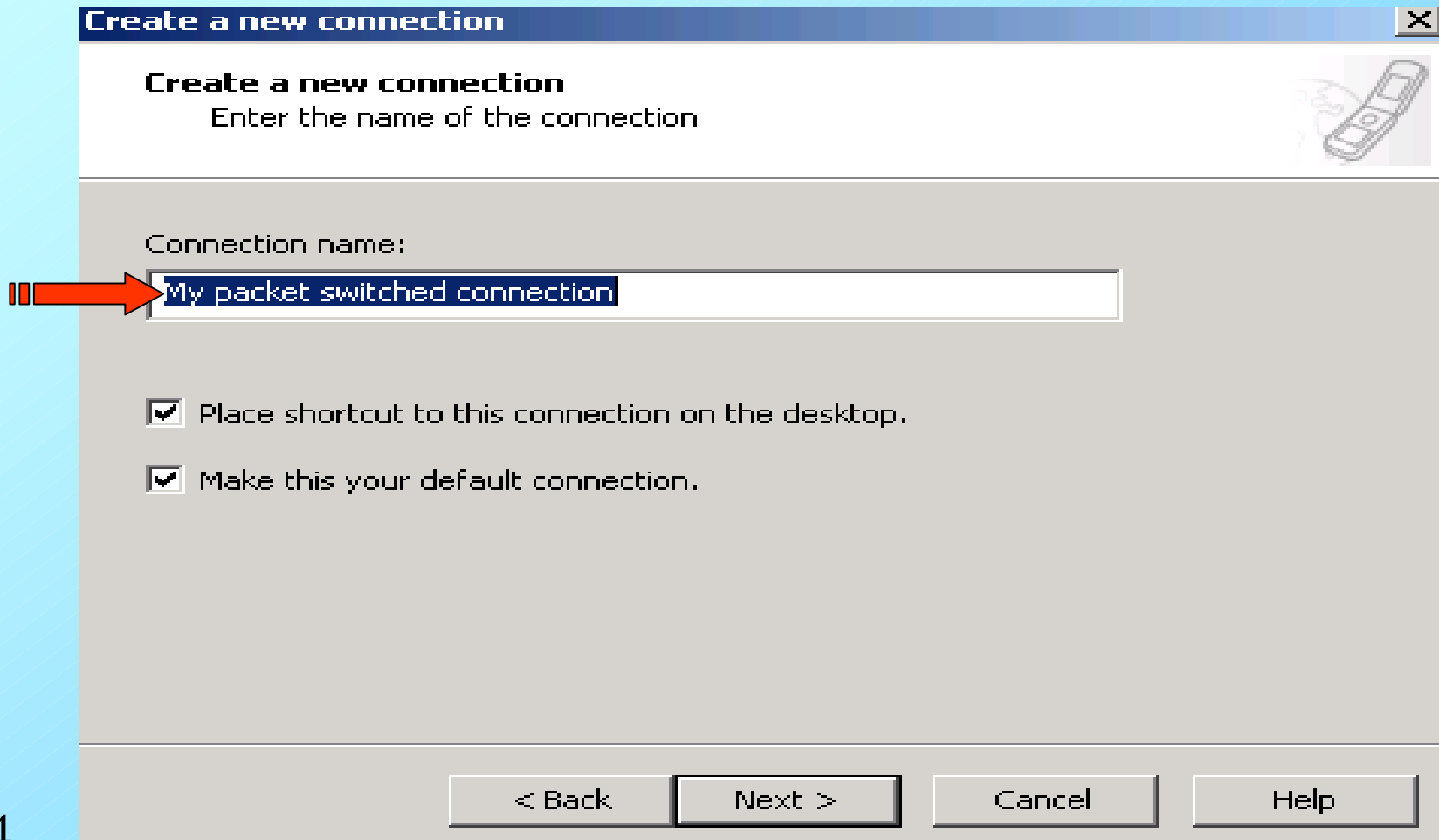
Packet Switched Data connection will be automatically selected.
If not then select and click on Next>



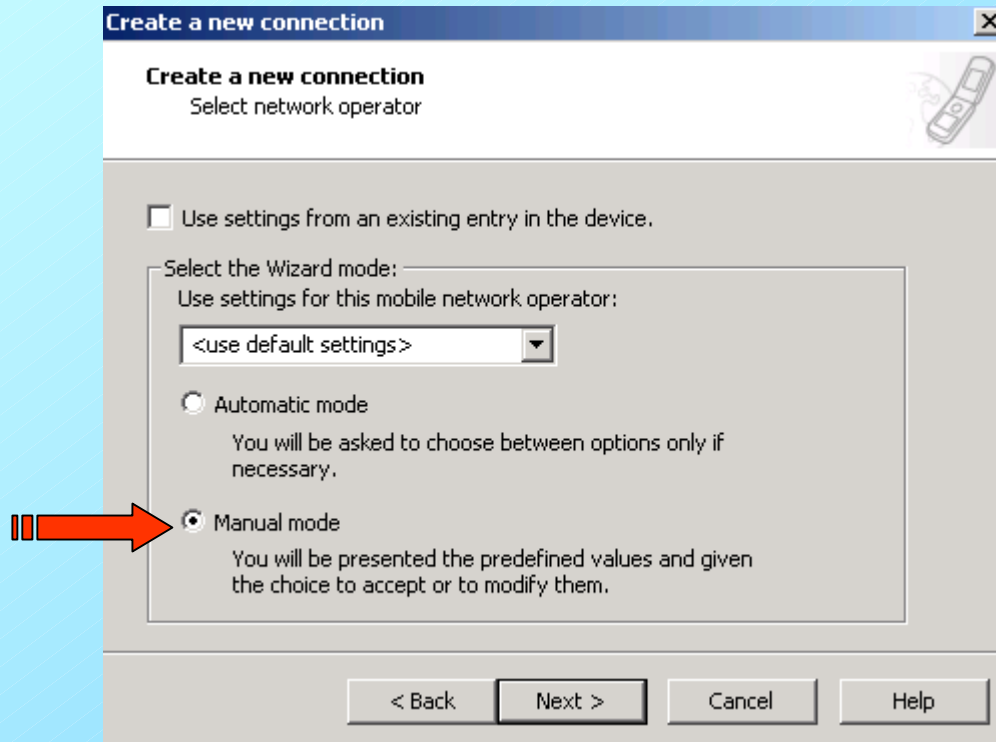
Click on Next>



Check box of “Place shortcut...” and you can give connection name as you like. By default it will be My packet switched connection as shown in slide below. I had given the name as B.S.N.L. GPRS (WEST) (you can see in slide no.29 and onwards). Click on Next>



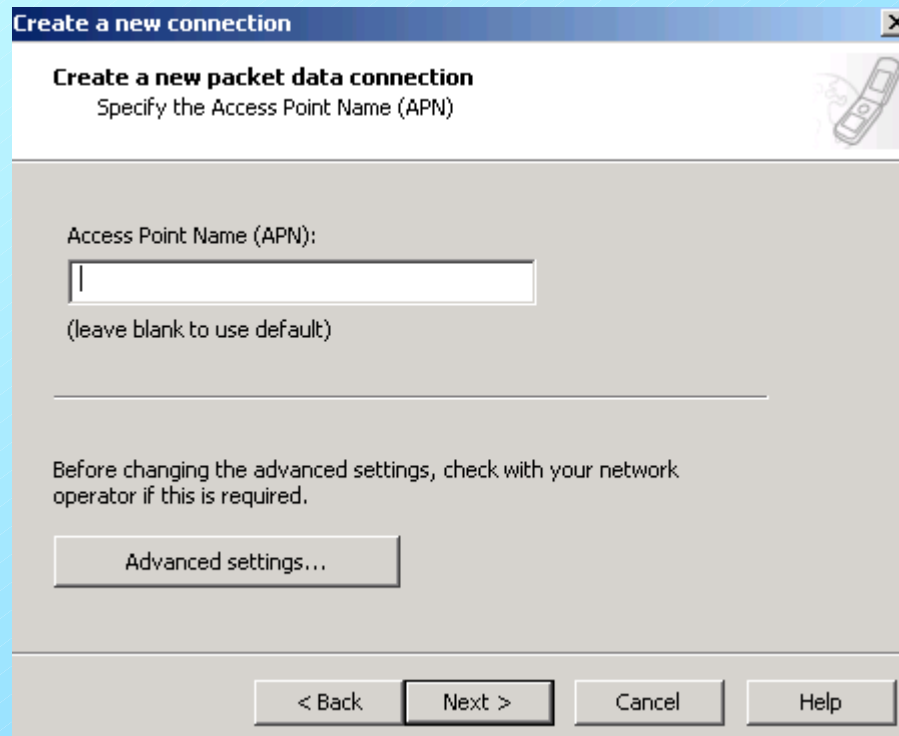
Select Manual mode and click on Next>



This is very important step. Here you have to write (in small)
Access Point Name (APN):

gprswest.cellone.in

It should be exactly shown in next slide.



Create a new connection

Create a new packet data connection
Specify the Access Point Name (APN)

Access Point Name (APN):

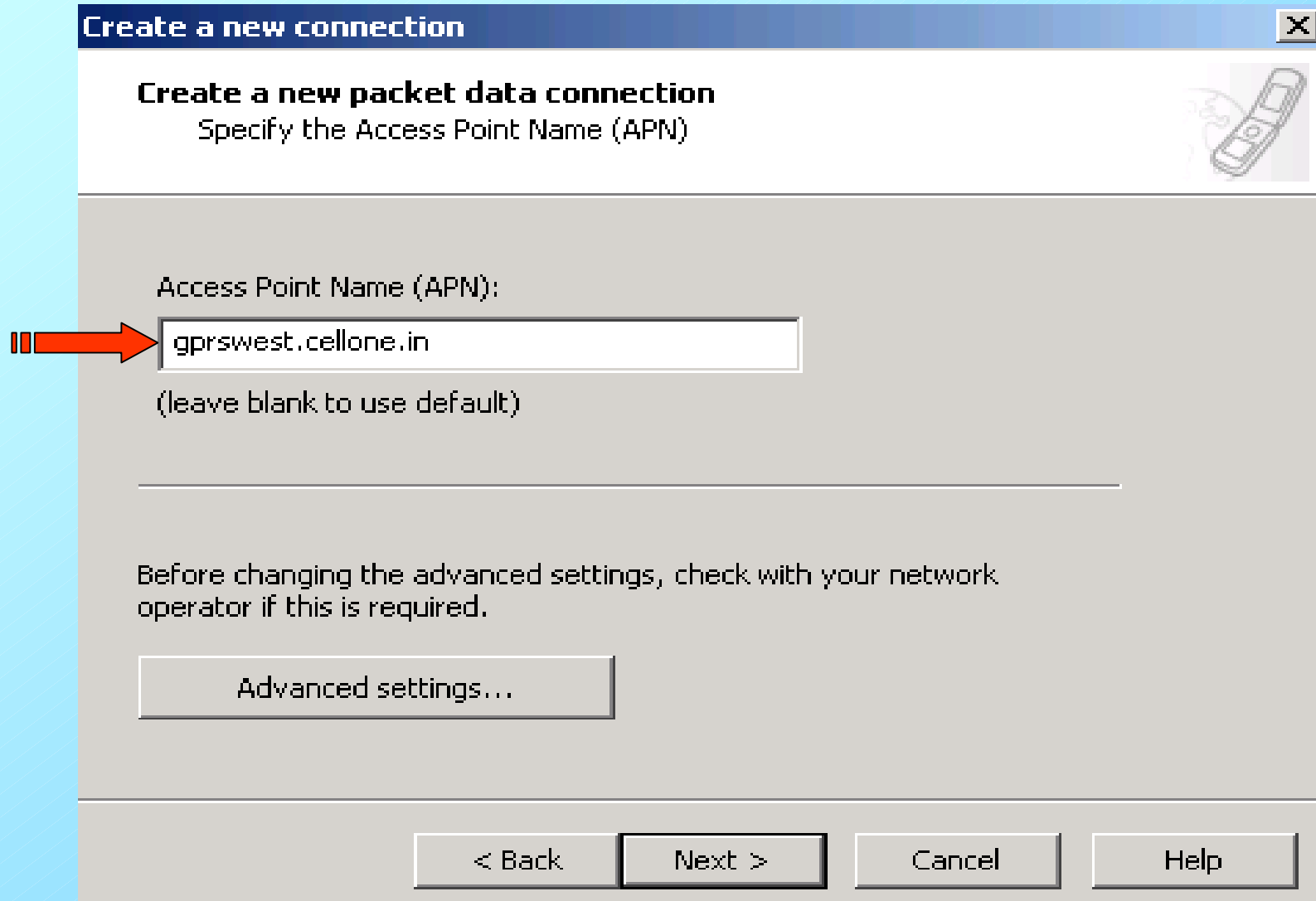
(leave blank to use default)

Before changing the advanced settings, check with your network operator if this is required.

Advanced settings...


< Back Next > Cancel Help

All in small(not capital) and click on Next>



User ID and Password should be **BLANK** and click on Next>

Create a new connection ✕

Create a new connection
Enter the logon information 

Your service provider may require you to logon using a specific User ID and Password.

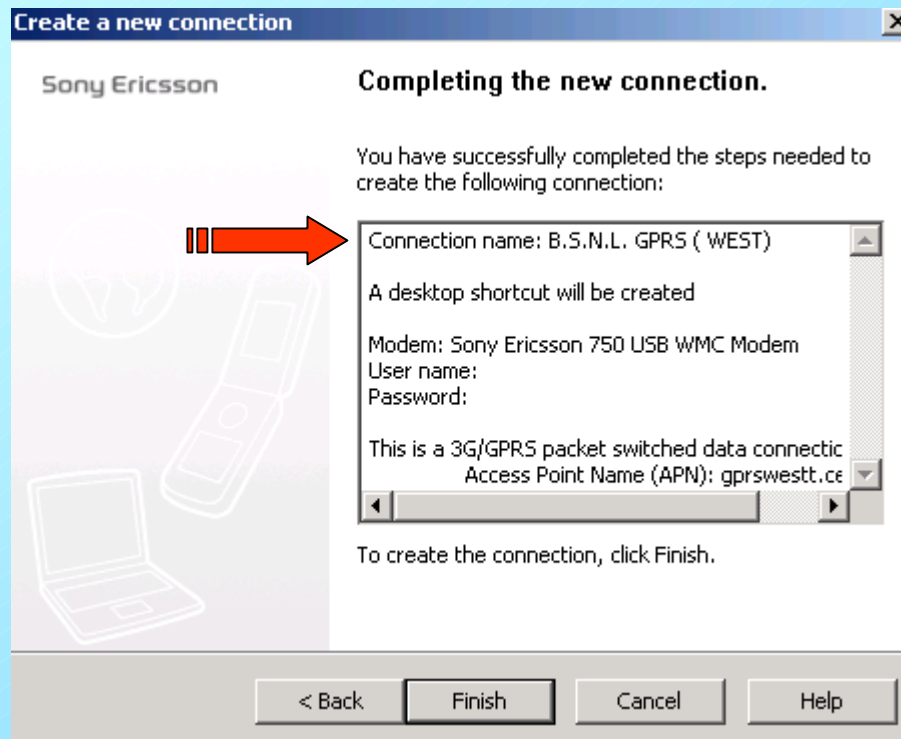
You may enter the information now, or when making a connection. Leave the fields empty if your service provider does not require the information.

User ID:

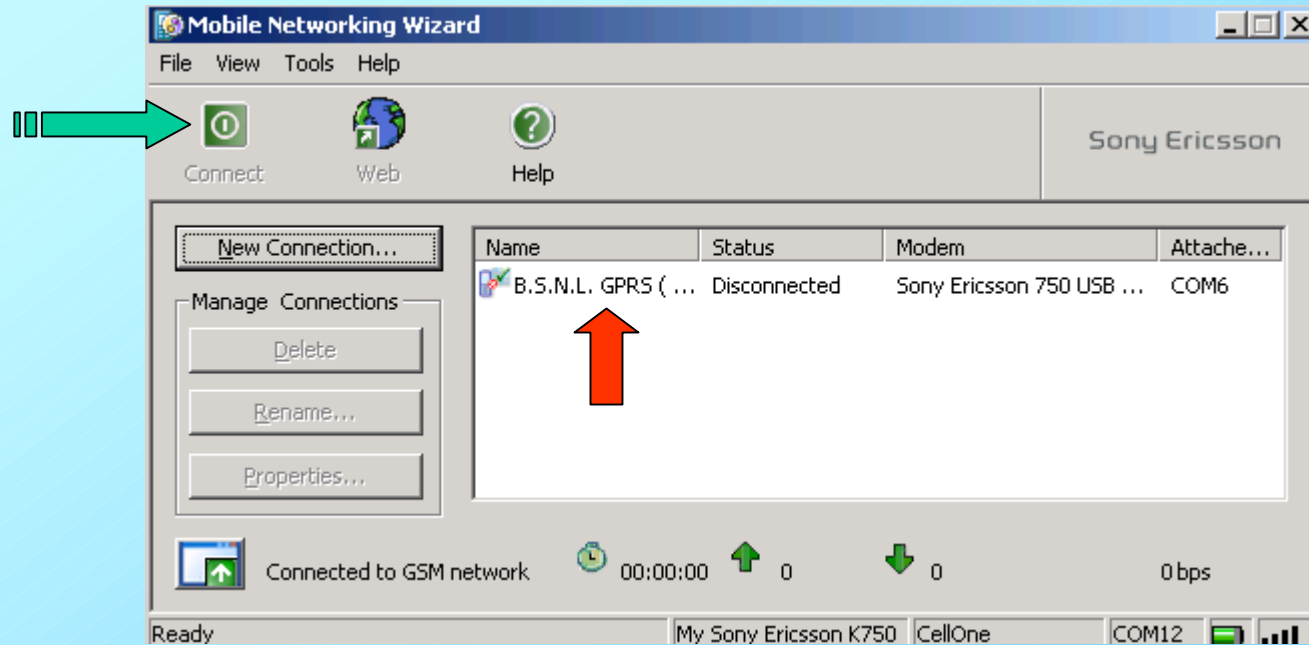
Password:

< Back Next > Cancel Help

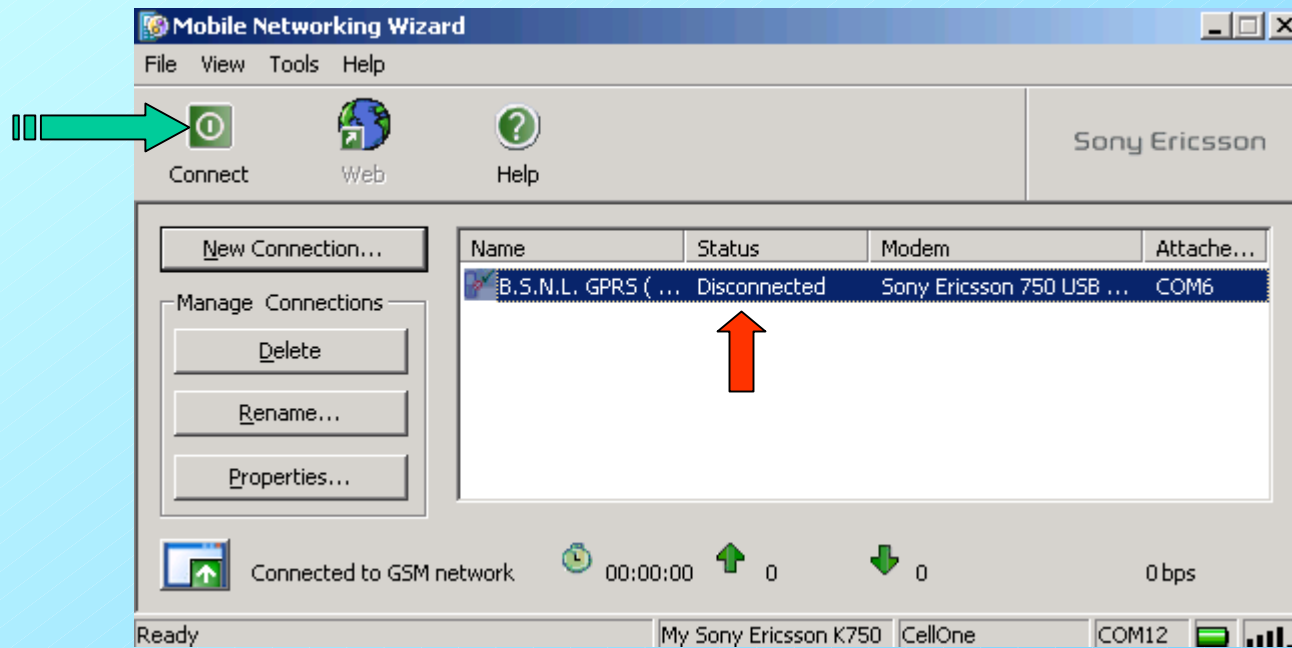
Please see the connection name as shown below(if you had given any specific name it will be displayed here).Click on Finish



Please observe connect is not activated (Green arrow) because you have to select the connection which has to be connected. Please select the connection (Red arrow).



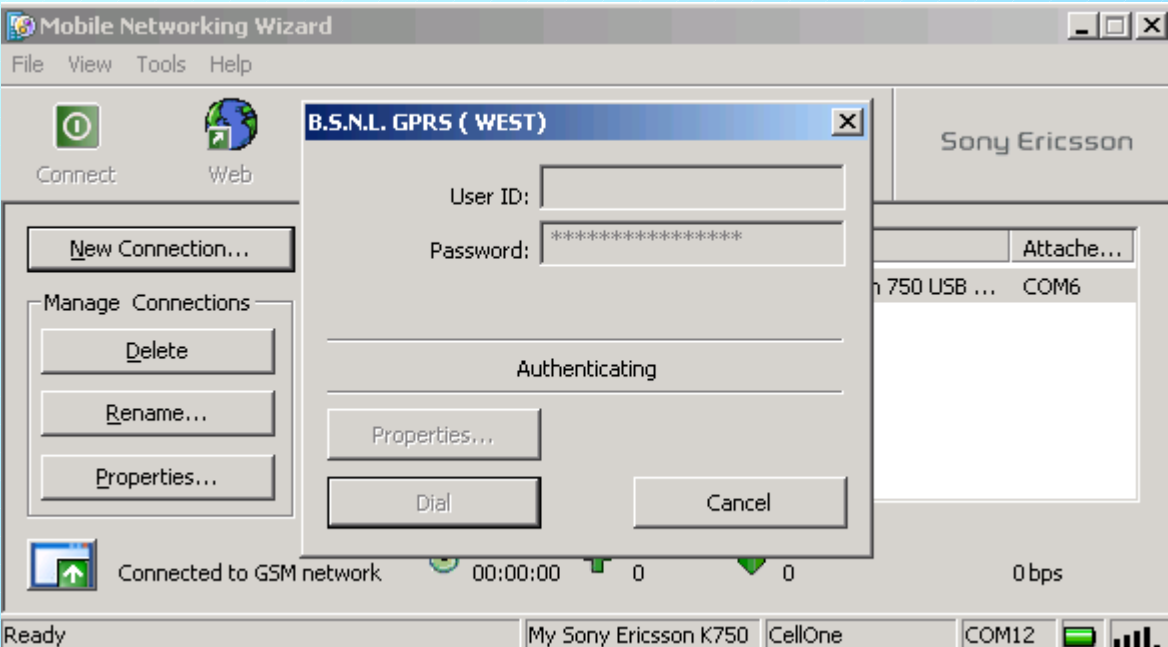
As soon as you select the connection the Connect button (Green arrow) will be activated. Click on Connect. Please observe Status (Red arrow) its Disconnected.



This will be shown. User Id is blank and Password shown by several stars though we had kept it blank. It is displayed automatically.

Please ignore it.

Please wait.



ITS CONNECTED.....you can now open any internet site.

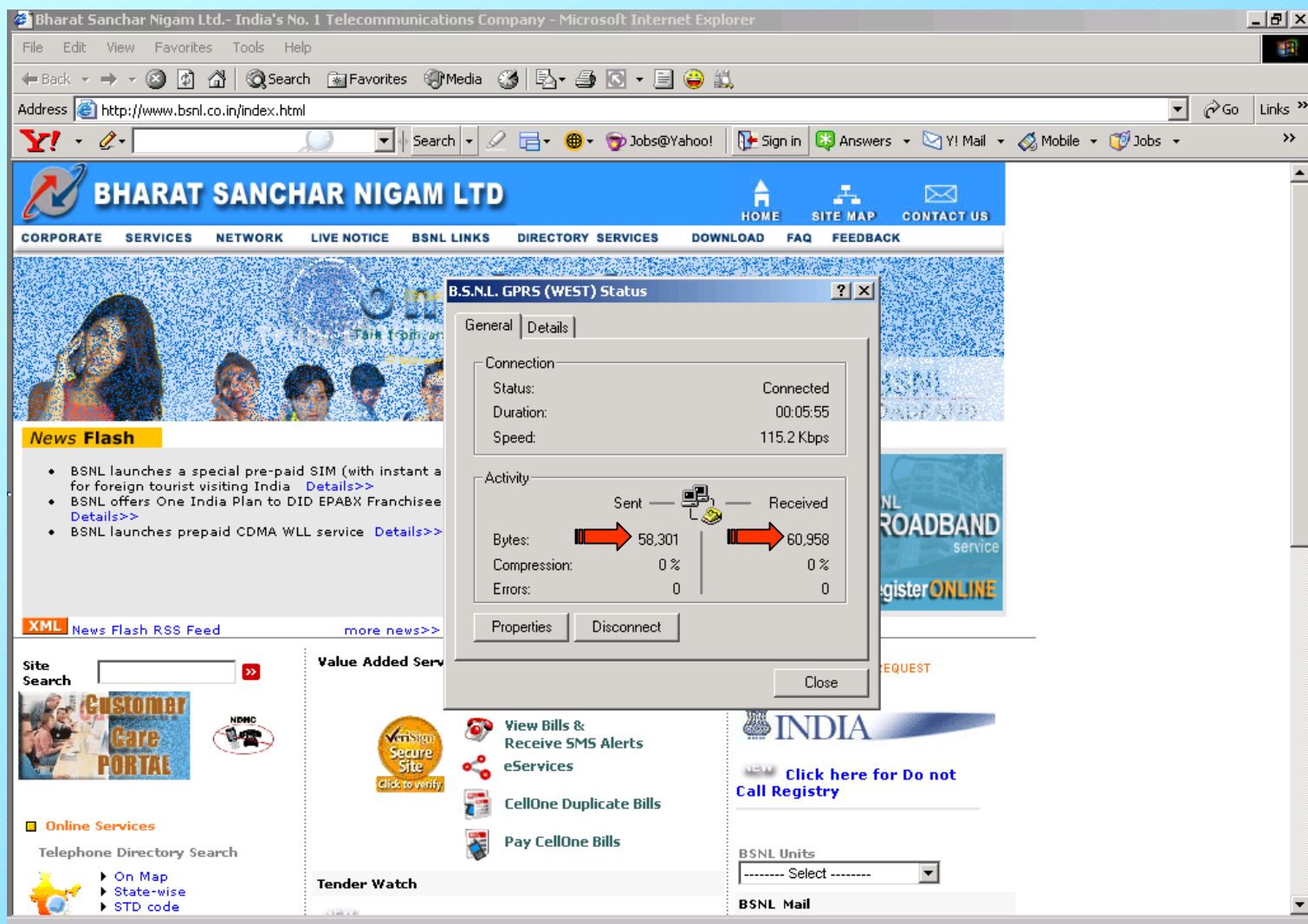
Earlier the Status was showing disconnected(Red arrow) Now its connected and Connect button(Green arrow) will change to red and Disconnect (Please see the right bottom corner of your screen).

The screenshot displays the 'Mobile Networking Wizard' application window. The title bar reads 'Mobile Networking Wizard'. The menu bar includes 'File', 'View', 'Tools', and 'Help'. Below the menu bar, there are three buttons: 'Disconnect' (with a red circle and arrow icon), 'Web' (with a globe icon), and 'Help' (with a question mark icon). An orange arrow points to the 'Disconnect' button. The main area contains a 'New Connection...' button and a 'Manage Connections' section with 'Delete', 'Rename...', and 'Properties...' buttons. A table lists connections:

Name	Status	Modem	Attache...
B.S.N.L. GPRS (...)	Connected	Sony Ericsson 750 USB ...	COM6

A green arrow points to the 'Connected' status in the table. At the bottom, a status bar shows 'Connected to GSM network', a clock icon with '00:00:13', an upward green arrow with '3307', a downward green arrow with '301', and '115200 bps'. The Windows taskbar at the bottom shows 'Ready', 'My Sony Ericsson K750', 'CellOne', 'COM12', and a network status icon. A tooltip for the network icon shows 'B.S.N.L. GPRS (WEST)' and 'Speed: 115.2 Kbps'.

Its wonderful world of internet via B.S.N.L. GPRS. For knowledge click on LAN icon (two computers ) in the right bottom corner. Received Bytes should be greater than sent and Errors should be 0. It is advisable to disable the other LAN connection if any you are using.



The screenshot shows the BSNL website in Microsoft Internet Explorer. The browser address bar displays <http://www.bsnl.co.in/index.html>. The website header includes the BSNL logo and navigation links: HOME, SITE MAP, CONTACT US, CORPORATE, SERVICES, NETWORK, LIVE NOTICE, BSNL LINKS, DIRECTORY SERVICES, DOWNLOAD, FAQ, FEEDBACK. A "News Flash" section lists recent updates, such as "BSNL launches a special pre-paid SIM (with instant a for foreign tourist visiting India)". A "B.S.N.L. GPRS (WEST) Status" window is open, showing connection details and activity. The activity section displays a bar chart with two arrows: a red arrow pointing right for "Sent" and a blue arrow pointing left for "Received".

Connection	Status
Connection	Connected
Status	Connected
Duration	00:05:55
Speed	115.2 Kbps

Activity	Sent	Received
Bytes	58,301	60,958
Compression	0 %	0 %
Errors	0	0

B.S.N.L. GPRS (WEST)
Speed: 115.2 Kbps
Sent: 21,380 bytes
Received: 28,498 bytes

To eject USB cable click on symbol(Red arrow) then click on OK and disconnect the cable.

Bharat Sanchar Nigam Ltd.- India's No. 1 Telecommunications Company - Microsoft Internet Explorer

File Edit View Favorites Tools Help

Address http://www.bsnl.co.in/index.html

BHARAT SANCHAR NIGAM LTD

HOME SITE MAP CONTACT US

CORPORATE SERVICES NETWORK LIVE NOTICE BSNL LINKS DIRECTORY SERVICES DOWNLOAD FAQ FEEDBACK

oneindia Plan
Talk from anywhere to anywhere in India @ Rs.1/-minute

News Flash

- BSNL launches a special pre-paid SIM (with in for foreign tourist visiting India [Details>>](#)
- BSNL offers One India Plan to DID EPABX Fra [Details>>](#)
- BSNL launches prepaid CDMA WLL service [De](#)

Safe To Remove Hardware

The 'USB Mass Storage Device' device can now be safely removed from the system.

OK

XML News Flash RSS Feed [more news>>](#)

Site Search

Customer Care Portal

Value Added Services

- Pay Landline Bills
- View Bills & Receive SMS Alerts eServices
- CellOne Duplicate Bills
- Pay CellOne Bills

Tender Watch

TELEMARKETER'S REQUEST

india.gov.in

INDIA

NEW [Click here for Do not Call Registry](#)

BSNL Units

----- Select -----

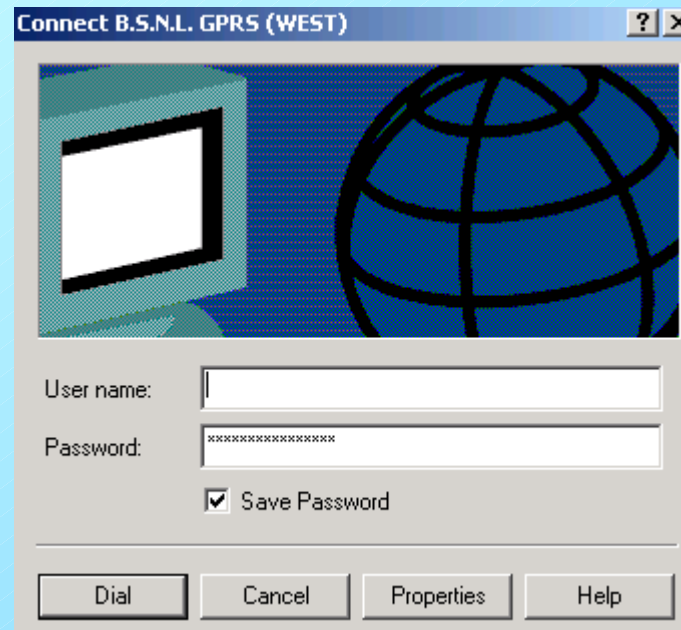
BSNL Mail

Stop USB Mass Storage Device - Drive(F:)

Internet

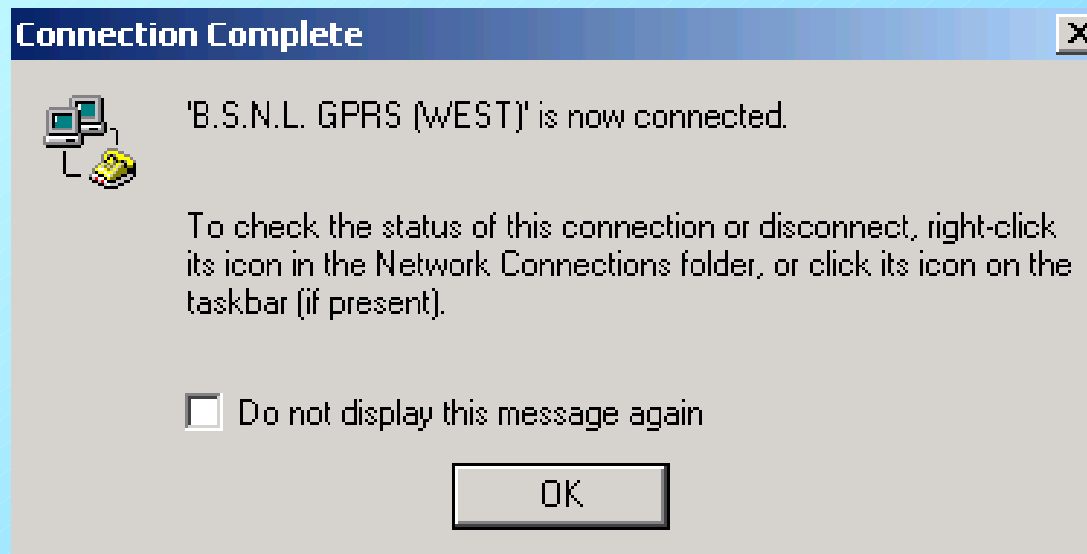
2:04 PM

For the next time connection, connect cable to mobile and computer. Click on fallback connection From your PC/Laptop and click on Dial.



Its connected...again.

Click on OK and browse any internet site



THANK YOU

FOR USING B.S.N.L.CELLULAR SERVICES

Still if you have the problem please refer our slide show of **PROBLEMS AND SOLUTIONS**
or

contact our 24 hour 365 days

help line no.9400024365 from landline and 24365 from mobile.